

# INDEX

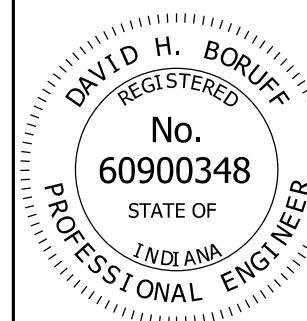
SHEET NO.	SUBJECT
1	Temporary Closures, Index and General Notes
2	Temporary Closures of a Divided Highway
3	Temporary Closure of a Freeway or Expressway with Detour
4	Temporary Closures for Project Following Completion of Grading Contract

INDIANA DEPARTMENT OF TRANSPORTATION

TEMPORARY CLOSURES,  
INDEX AND GENERAL NOTES

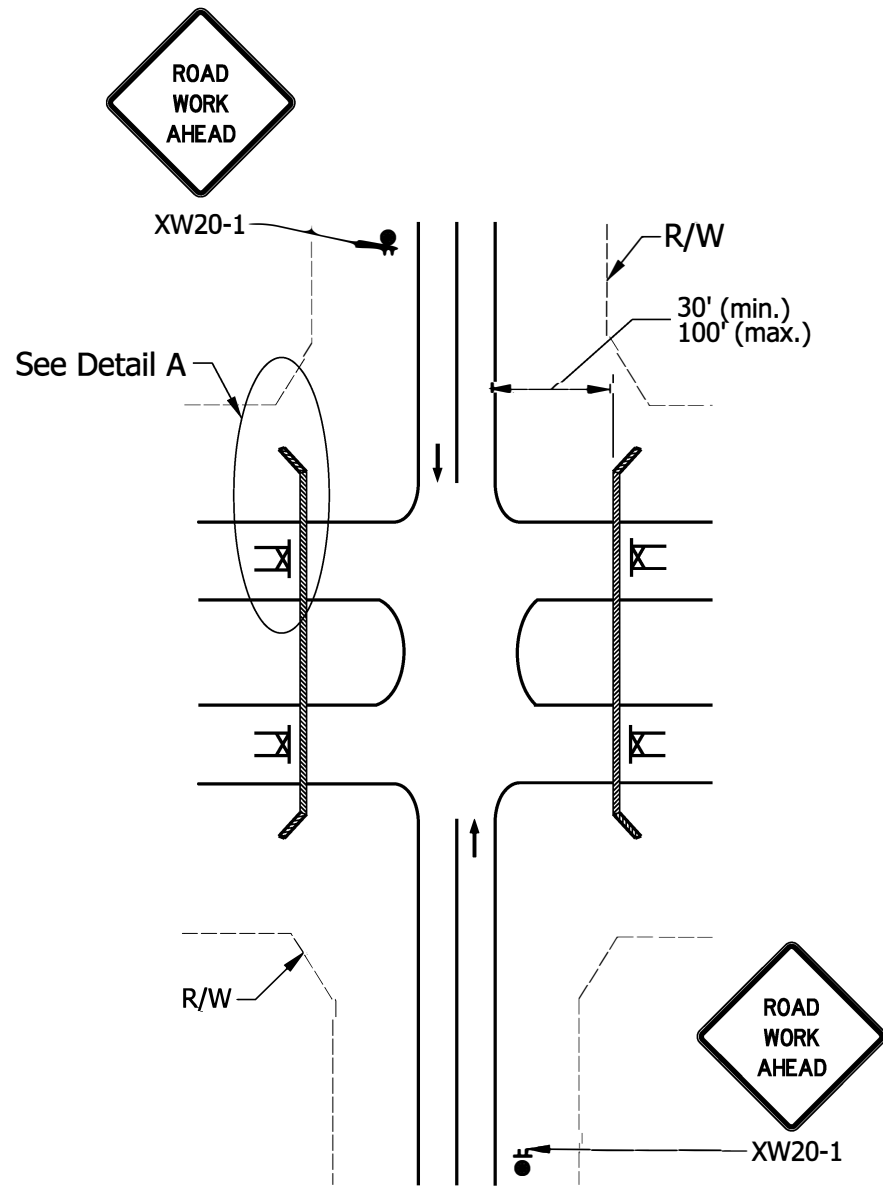
SEPTEMBER 2022

STANDARD DRAWING NO. E 801-TCTC-01

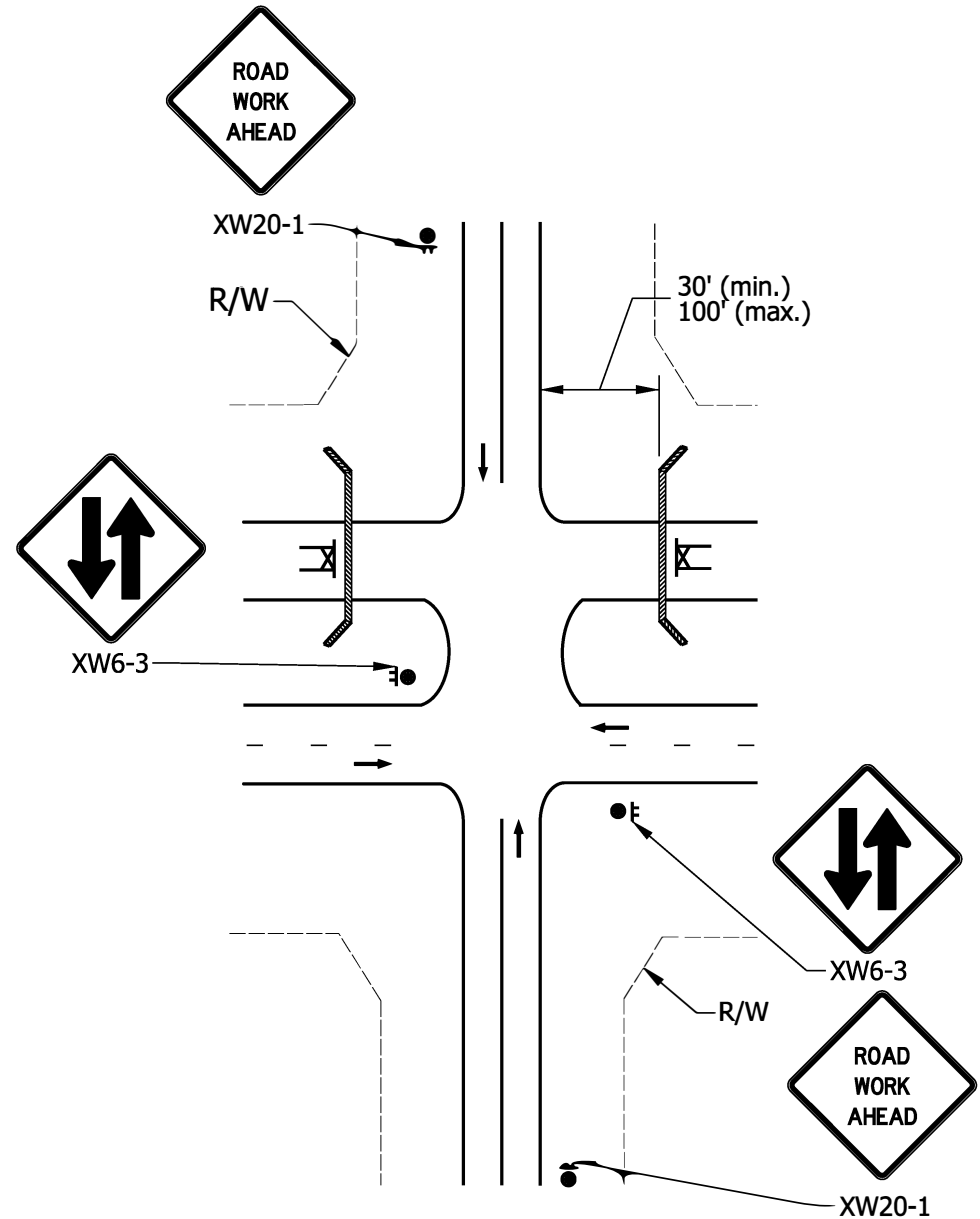


*David H. Boruff* 06/08/22  
DESIGN STANDARDS ENGINEER DATE

*[Signature]* 06/27/2022  
CHIEF ENGINEER DATE



TEMPORARY CLOSURE OF A DIVIDED HIGHWAY

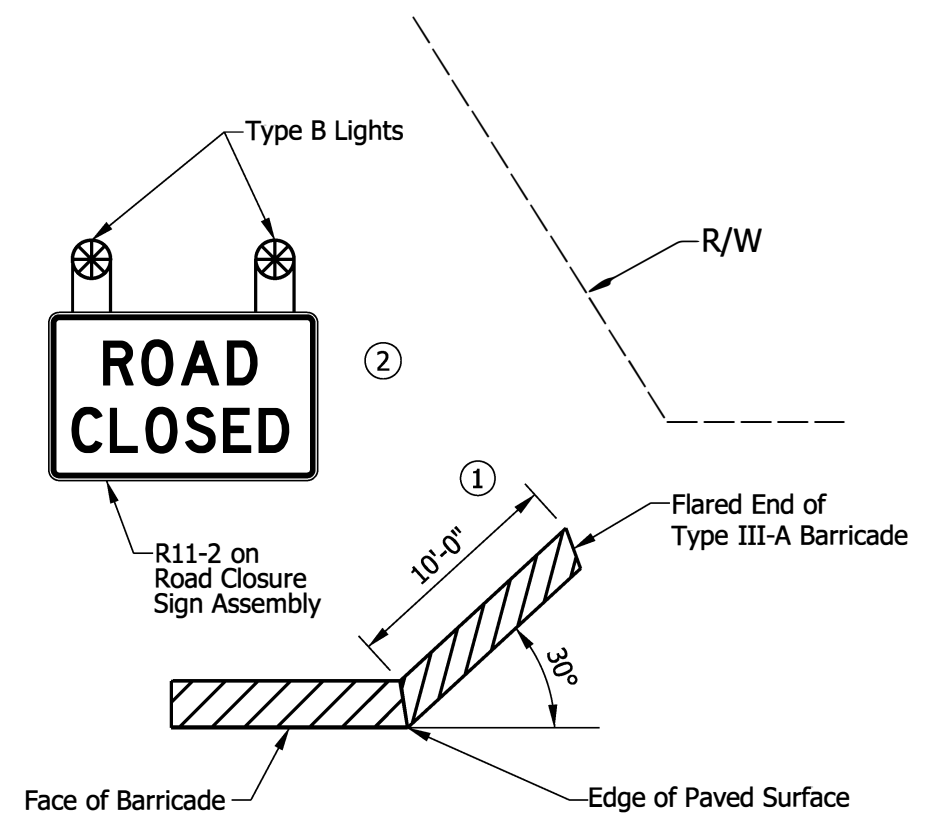


TEMPORARY CLOSURE OF ONE SIDE OF A DIVIDED HIGHWAY

- LEGEND**
- Construction Sign and Supports
  - Road Closure Sign Assembly
  - Type III-A Barricades
  - Direction of Traffic
  - Construction Warning Light

**NOTES:**

- ① Type III-A barricades shall be used to R/W, or to the point where no longer traversable.
- ② See Standard Drawing series E 801-TCDV for road closure sign assembly and Type III barricade details.

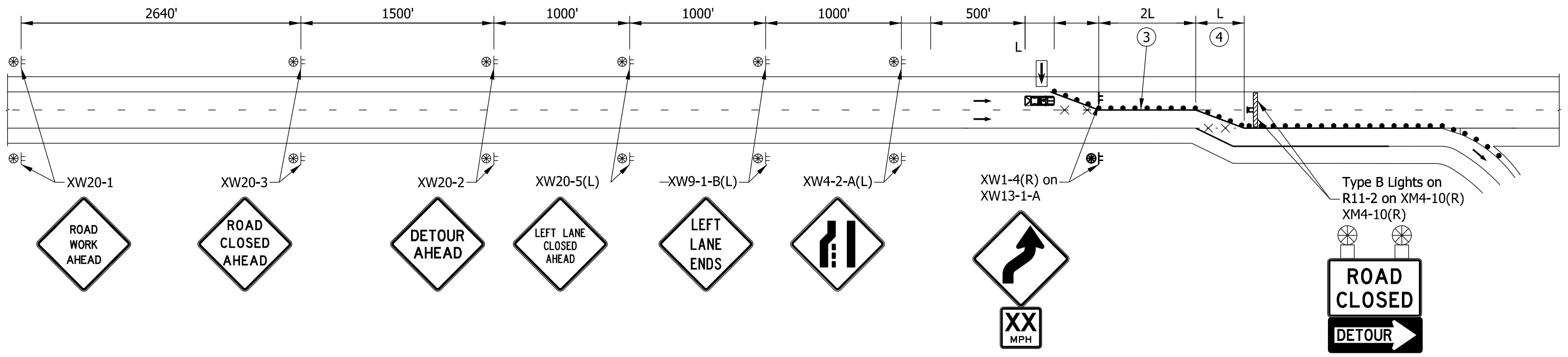


DETAIL A

INDIANA DEPARTMENT OF TRANSPORTATION	
TEMPORARY CLOSURES OF A DIVIDED HIGHWAY	
SEPTEMBER 2026	
STANDARD DRAWING NO. E 801-TCTC-02	
	<p style="text-align: right;"><i>David H. Boruff</i> DESIGN STANDARDS ENGINEER      4/28/2026 DATE</p> <p style="text-align: right;"><i>[Signature]</i> CHIEF ENGINEER      04/29/2026 DATE</p>

**NOTES:**

1. See Standard Drawing E 801-TCDV-03 for merge distance, L. The value of L on freeways shall be based on 70 mph.
2. Channelizing devices shall not encroach into travel lane.
- ③ Yellow line, not required for closures  $\leq 3$  days.
- ④ Channelizing device spacing in taper shall be 20 ft
5. See Standard Drawing E 801-TCLC-01 for advance signing requirements for interstate applications.



**LEGEND**

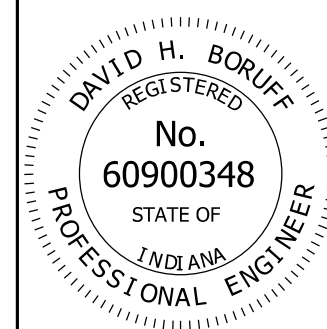
- Flashing Arrow Sign
- Channelizing Device
- Construction Sign and Supports
- Removal of Pavement Markings and Prismatic Reflectors
- Type III-A Barricades
- Direction of Traffic
- Construction Warning Light
- Road Closure Sign Assembly
- Truck Mounted Attenuator

INDIANA DEPARTMENT OF TRANSPORTATION

TEMPORARY CLOSURE OF FREEWAY  
OR EXPRESSWAY WITH DETOUR

SEPTEMBER 2026

STANDARD DRAWING NO. E 801-TCTC-03

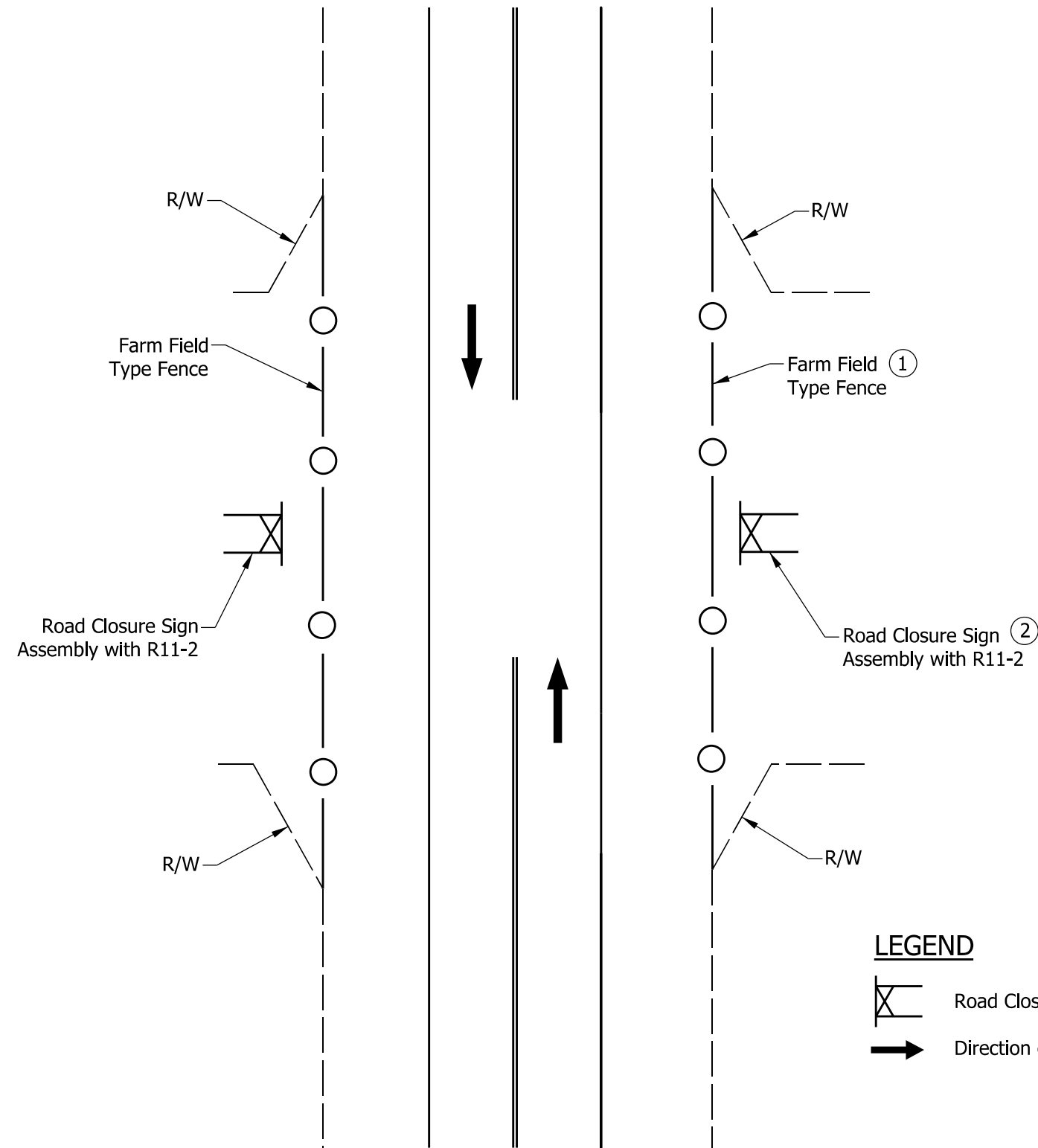


*David H. Boruff* 4/28/2026  
DESIGN STANDARDS ENGINEER DATE



*[Signature]* 04/29/2026  
CHIEF ENGINEER DATE

**NOTES:**

- ① See Standard Drawing series E 603-FFTF for farm field type fence detail.
- ② See Standard Drawing series E 801-TCDV for Type III barricade and road closure sign assembly detail.



**LEGEND**

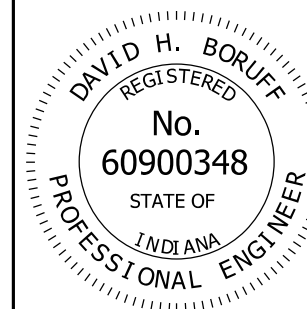
-  Road Closure Sign Assembly
-  Direction of Traffic

INDIANA DEPARTMENT OF TRANSPORTATION

TEMPORARY CLOSURES FOR PROJECT  
FOLLOWING COMPLETION OF GRADING  
CONTRACT

SEPTEMBER 2022

STANDARD DRAWING NO. E 801-TCTC-04



*David H. Boruff* 06/08/22  
DESIGN STANDARDS ENGINEER DATE

*[Signature]* 06/27/2022  
CHIEF ENGINEER DATE